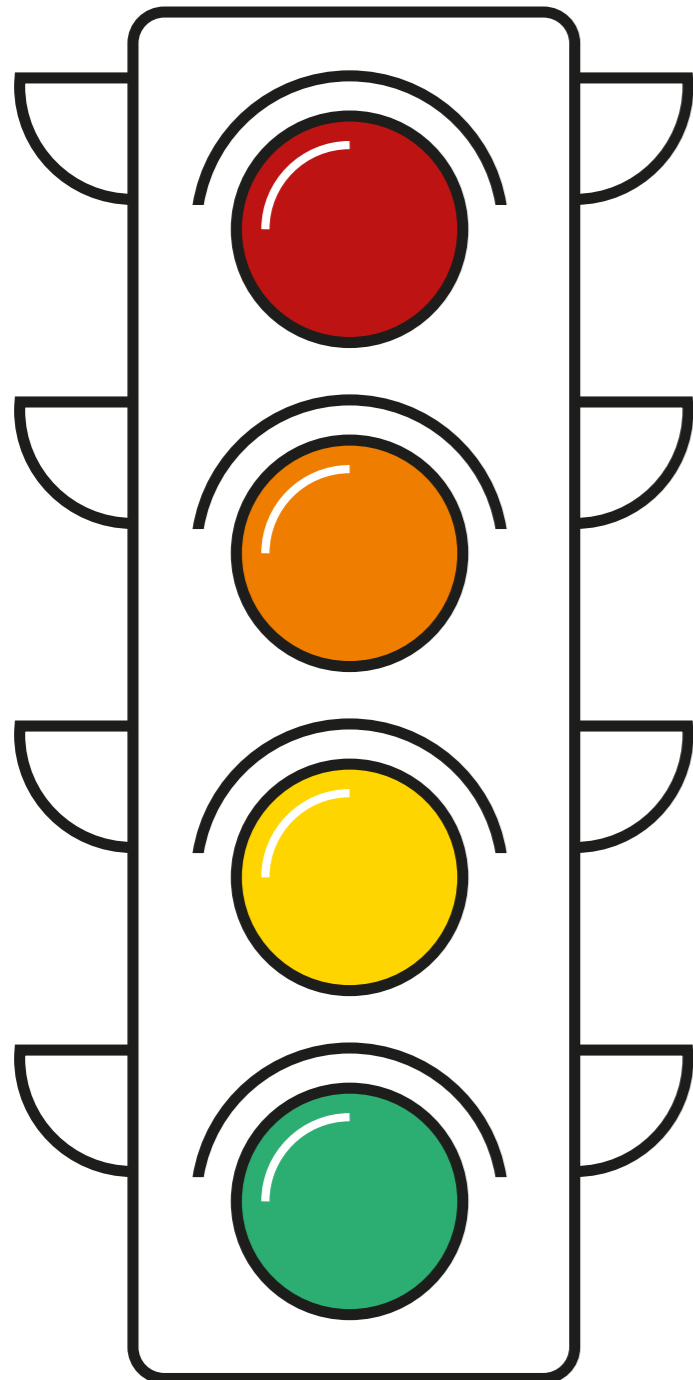


Corona Traffic Lights in Childcare Services



Mode with highest safety measures (maximum risk)

In addition to measures in phase orange:

- Staff wears face-mask throughout all day in childcare settings
- Children - even at the compulsory age - may stay home - telephone contact is possible

Mode with increased safety measures (high risk)

In addition to measures in phase yellow:

- Hand over children to staff in a previously agreed meeting point
- There are no parents' evenings or celebrations allowed - contact to parents only via telephone
- There are no activities from external partners (e.g. dental hygiene etc.)
- No contact allowed between groups in childcare service
- Physical activities and singing are only allowed outdoors

Normal mode with increased hygiene measures (moderate risk)

In addition to measures in phase green:

- Wear a face mask at the entrance
- Physical activities and singing are preferably arranged outdoors

Normal mode with hygiene measures (low risk)

- There are special hygiene measures in all services - ask your childcare manager for further information
- Maintain a distance of at least 2 meters to others - if not possible, wear a face-mask
- Avoid gatherings of parents, staff or children in childcare setting
- Wash or disinfect your hands when entering the childcare service
- Stay in childcare service only for the time most necessary

Important Notice: Don't bring your child if he/she, parents or other household members are sick (fever, cough, sore throat, shortness of breath).

Thank you for your support!